

ENDURALINE

∞ BUILT TO LAST ∞

JOB NAME:

TYPE:

CATALOG #:

GENERAL DESCRIPTION:

An architectural wedge sconce, the **AW Series** is a decorative outdoor unit, ideal as a signature piece and where full cutoff is required. Ideal for low to medium mounting heights.

HOUSING:

- Heavy duty die cast aluminum
- Architectural detailing
- Stainless steel hardware

OPTICS:

- Flat tempered glass lens
- Anodized aluminum reflector
- **W** = wide throw, **F** = Forward throw

MOUNTING:

- Quick mount assembly for one person
- All units should be installed by a licensed electrical contractor in accordance with NEC guidelines.

ELECTRICAL / BALLAST:

- 4kv pulse rated medium base socket
- N (NPF Reactor) 120v
- DT (HPF/DUAL TAP) 120/277v
- QT (HPF/QUAD TAP) 120-277v

LAMP:

- Medium base clear lamp
- **ALL LAMPS INCLUDED.**

FINISH:

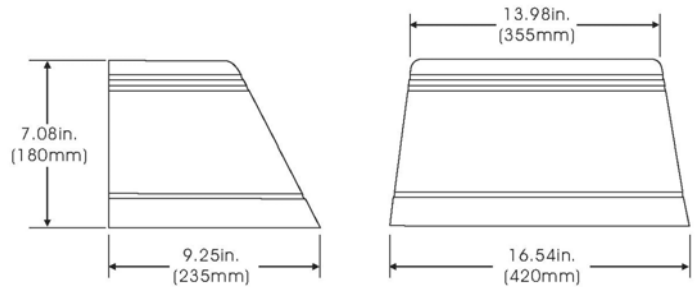
- Architectural bronze finish standard.

LISTINGS / WARRANTY:

- UL listed Wet Location
- 1 Year limited warranty.

NOTE: Specifications' SUBJECT TO CHANGE WITHOUT NOTICE.

ARCHITECTURAL WEDGE SCONCE AW SERIES



ORDERING INFORMATION

Example: AWW-70-HPS-120-N--LP

SERIES	WATTS	SOURCE	VOLTS	BALLAST	LAMP
AWW	70	HPS	120	N	LP
WIDE	100				
THROW	150				
	150	HPS	QT	H	LP
AWF	50	MH	DT	H	LP
FORWARD	70		QT	H	
THROW	100				
	150				
	175				

OPTIONS/ACCESSORIES: CONSULT FACTORY

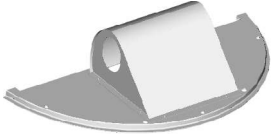
THREE DIFFERENT DISTRIBUTIONS TO MEET ANY APPLICATION:

FORWARD THROW: PROVIDES ILLUMINATION FOR AREAS FARTHER AWAY FROM THE BUILDING EXTERIOR.

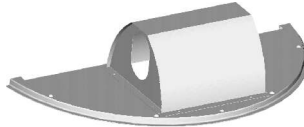
WIDE THROW: PROVIDES ILLUMINATION FOR AREAS CLOSER TO AND/OR ADJASCENT TO THE BUILDING EXTERIOR.

UP/DOWN: PROVIDES ILLUMINATION FOR AREAS CLOSER TO AND/OR ADJASCENT TO THE BUILDING EXTERIOR WITH AN ADDED UPLIGHT COMPONENT FOR A SIGNAUTURE OR ARCHITECTURAL EFFECT.

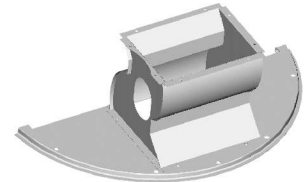
Forward Throw



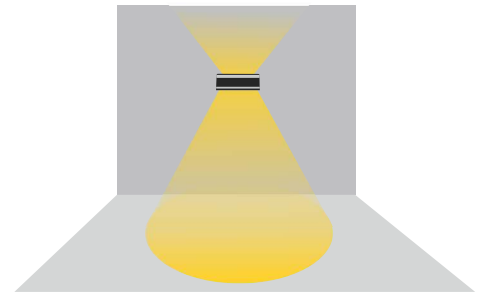
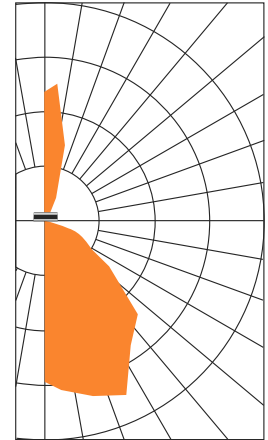
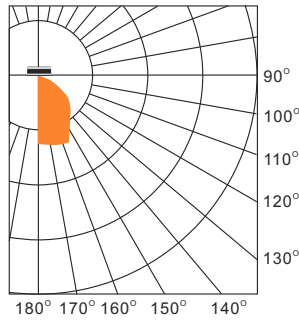
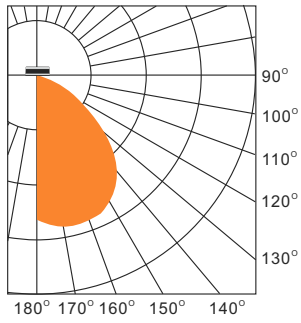
Wide Throw



Up & Down



AB SCONCE ONLY



INSTALLATION IS EASY WITH FIVE SIMPLE STEPS.

Compared to other products requiring two people to install, a single person can install our product, and with our internal leveling device, each luminaire is installed correctly each and every time.

- A. Unscrew the factory installed mounting plate.
- B. Remove the factory installed mounting plate.
- C. Using the bubble level, install the mounting plate to your wall or jbox.
- D. Lift and lock the luminaire to the wall mounting plate.
- E. Tighten and secure the locking screw.

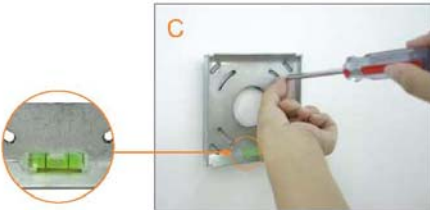
Done.



Uninstall the mounting bracket from fixture base plate by unscrewing the 2 hex socket studs.



Remove the mounting bracket.



Level the bracket to intend altitude, install the bracket on the wall.



Lift the fixture up and tilt slightly toward the wall mounted bracket as figure D shown, hook the fixture base plate with the mounting bracket.



Screw tight the bracket and fixture.