

# ENDURALINE

∞ BUILT TO LAST ∞

JOB NAME:

TYPE:

CATALOG #:

## GENERAL DESCRIPTION:

An architectural wedge sconce, the **AB Series** is a decorative outdoor unit, ideal as a signature piece and where full cutoff is required. Ideal for low to medium mounting heights.

## HOUSING:

- Heavy duty die cast aluminum
- Architectural detailing
- Stainless steel hardware

## OPTICS:

- Flat tempered glass lens
- Anodized aluminum reflector
- **W** = wide throw, **F** = Forward throw, and **UD** = Up Down

## MOUNTING:

- Quick mount assembly for one person
- All units should be installed by a licensed electrical contractor in accordance with NEC guidelines.

## ELECTRICAL / BALLAST:

- 4kv pulse rated medium base socket
- N (NPF Reactor) 120v
- DT (HPF/DUAL TAP) 120/277v
- QT (HPF/QUAD TAP) 120-277v

## LAMP:

- Medium base clear lamp
- **ALL LAMPS INCLUDED.**

## FINISH:

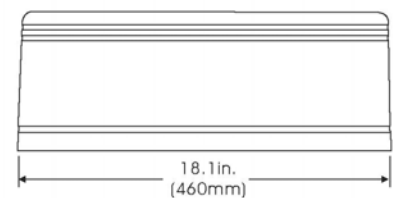
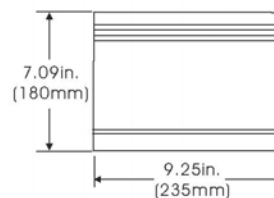
- Architectural bronze finish standard.

## LISTINGS / WARRANTY:

- UL listed Wet Location
- 1 Year limited warranty.

**NOTE:** Specifications' SUBJECT TO CHANGE WITHOUT NOTICE

## ARCHITECTURAL BAND SCONCE AB SERIES



## ORDERING INFORMATION

**Example:** ABW-70-HPS-120-N-LP

SERIES	WATTS	SOURCE	VOLTS	BALLAST	LAMP
ABW	70	HPS	120	N	LP
WIDE	100				
	150				
ABF	150	HPS	QT	H	LP
FORWARD	50	MH	DT	H	LP
	70		QT	H	
ABUD	100				
UP DOWN	150				
	175				

**OPTIONS/ACCESSORIES: CONSULT FACTORY**

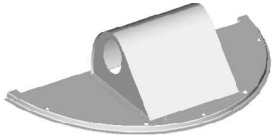
THREE DIFFERENT DISTRIBUTIONS TO MEET ANY APPLICATION:

FORWARD THROW: PROVIDES ILLUMINATION FOR AREAS FARTHER AWAY FROM THE BUILDING EXTERIOR.

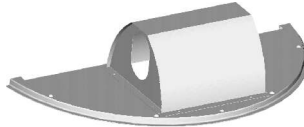
WIDE THROW: PROVIDES ILLUMINATION FOR AREAS CLOSER TO AND/OR ADJASCENT TO THE BUILDING EXTERIOR.

UP/DOWN: PROVIDES ILLUMINATION FOR AREAS CLOSER TO AND/OR ADJASCENT TO THE BUILDING EXTERIOR WITH AN ADDED UPLIGHT COMPONENT FOR A SIGNAUTURE OR ARCHITECTURAL EFFECT.

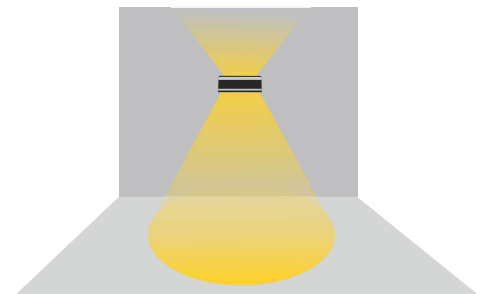
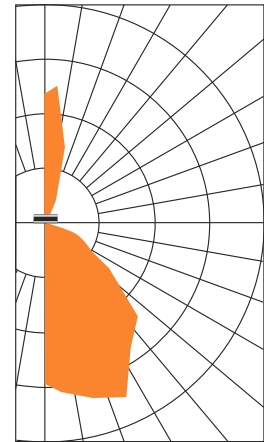
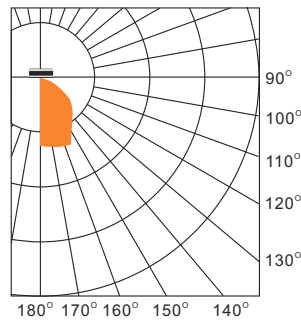
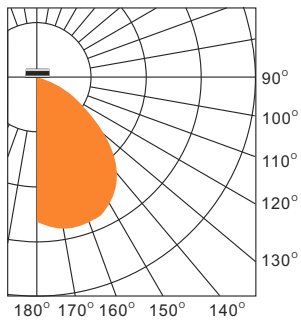
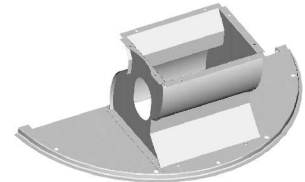
Forward Throw



Wide Throw



Up & Down



**INSTALLATION IS EASY WITH FIVE SIMPLE STEPS.**

Compared to other products requiring two people to install, a single person can install our product, and with our internal leveling device, each luminaire is installed correctly each and every time.

- A. Unscrew the factory installed mounting plate.
- B. Remove the factory installed mounting plate.
- C. Using the bubble level, install the mounting plate to your wall or jbox.
- D. Lift and lock the luminaire to the wall mounting plate.
- E. Tighten and secure the locking screw.

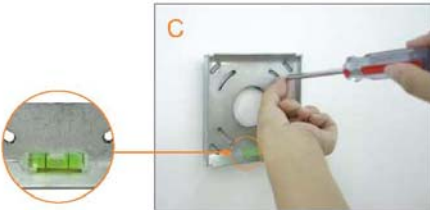
Done.



**Uninstall the mounting bracket from fixture base plate by unscrewing the 2 hex socket studs.**



**Remove the mounting bracket.**



**Level the bracket to intend altitude, install the bracket on the wall.**



**Lift the fixture up and tilt slightly toward the wall mounted bracket as figure D shown, hook the fixture base plate with the mounting bracket.**



**Screw tight the bracket and fixture.**