

**DESCRIPTION**

- A high quality all purpose economy strip in a one lamp cross section, offered in a variety of T5 configurations.

**HOUSING**

- Heavy duty die formed 20 gauge steel housing.
- Snap in socket end plates.
- Slide on ballast cover with tool less retention.
- Knockouts for mounting, conduit feed, cord sets, or continuous row.

**MOUNTING**

- Fixtures designed for surface, stem or chain suspension.
- Can be installed as individual units or in continuous row mounting.

**BALLAST**

- Thermally protected, resetting, Class P, HPF, non-PCB, UL listed, CSA-certified ballast is standard.
- Rapid start ballasts are sound rated A.
- Standard combinations are CBM approved and conform to UL 935.

**WIRING & ELECTRICAL**

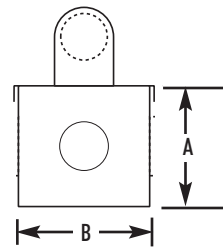
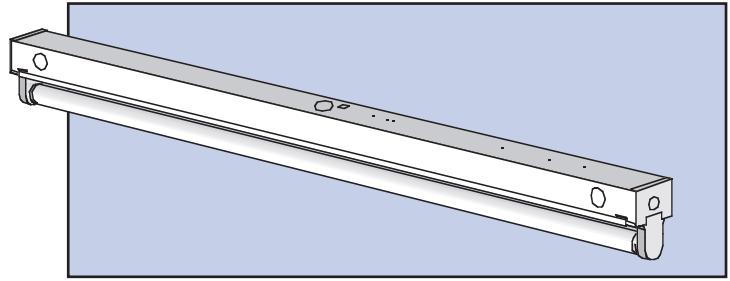
- Fixture conforms to UL 1598 and is suitable for damp locations.
- AWM, TFN or THHN wire used throughout, rated for required temperatures.

**FINISH**

- Iron-phosphate pretreatment ensures superior paint adhesion and rust resistance.
- Painted parts finished with high-gloss, baked white enamel.

**WARRANTY/LISTINGS**

- Suitable for damp locations.
- All units are UL listed and labeled accordingly.



**CROSS SECTION**

A : 7/8"  
 B : 1 3/8"

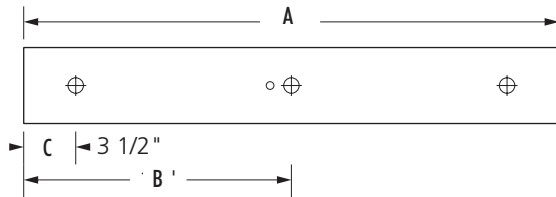
**ORDERING GUIDE** Example: TS5114PPN120-EM55

| Prefix                   | #Lamps   | Lamp   | Ballast Style (select one)   | Voltage  | Factory Installed Options   |
|--------------------------|----------|--|--|--|---|
| <b>TS5</b><br>Individual | <b>1</b> | <b>14</b> (22") T5<br><b>21</b> (34") T5<br><b>28</b> (46") T5<br><b>35</b> (58") T5<br><br><b>24HO</b> (22")<br><b>39HO</b> (34")<br><b>54HO</b> (46")<br><b>80HO</b> (58") | <b>PIN*</b><br>Performance Instant Start<br>Normal Light Output < 10% THD<br><br><b>PPN</b><br>Performance Programmed Start<br>Normal Light Output < 10% THD<br><br><b>PPN</b><br>Performance Programmed Start<br>Normal Light Output < 10% THD<br><br><b>PPNBL<sup>1</sup></b><br>Performance Programmed Start<br>Normal Light Output<br>Bi-Level Switching < 10% THD | <b>120</b><br><b>277</b><br><b>UNV*</b><br>(120/277) | Dimming Ballast - Consult Factory<br><b>GLR</b><br>Internal Fast Blow Fuse<br><b>GMF</b><br>Internal Slow Blow Fuse<br><b>EM55</b><br>300 - 700 Lumen EM Pack |

<sup>1</sup> PPNBL available only in .54w HO units  
 \*UNV ballast in PIN only

### DIMENSIONS

#### Individual



| 2' Unit      | 3' Unit      | 4' Unit      | 6' Unit       |
|--------------|--------------|--------------|---------------|
| A = 24 5/16" | A = 34 9/32" | A = 46 1/16" | A = 57 13/16" |
| B = 12 5/32" | B = 17 9/64" | B = 23 1/32" | B = 28 45/64" |
| C = 5/8"     | C = 5/8"     | C = 5/8"     | C = 5/8"      |

