

Job Title : _____
 Fixture Type : _____
 Catalog No. : _____
 Notes : _____

DESCRIPTION

- A high quality all purpose economy strip in a one lamp. cross section, offered in a variety of T8 configurations.

HOUSING

- Heavy duty die formed 20 gauge steel housing.
- Snap in socket end plates.
- Slide on ballast cover with tool less retention.
- Knockouts for mounting, conduit feed, cord sets, or continuous row.

MOUNTING

- Fixtures designed for surface, stem or chain suspension.
- Can be installed as individual units or in continuous row mounting.

BALLAST

- Thermally protected, resetting, Class P, HPF, non-PCB, UL listed, CSA-certified ballast is standard.
- Rapid start ballasts are sound rated A.
- Standard combinations are CBM approved and conform to UL 935.

WIRING & ELECTRICAL

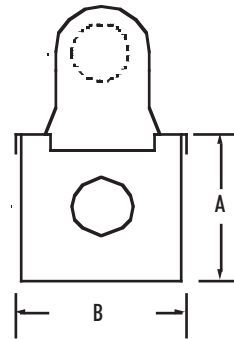
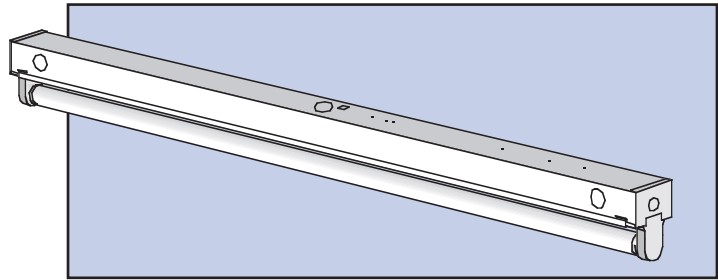
- Fixture conforms to UL 1598 and is suitable for damp locations.
- AWM, TFN or THHN wire used throughout, rated for required temperatures.

FINISH

- Iron-phosphate pretreatment ensures superior paint adhesion and rust resistance.
- Painted parts finished with high-gloss, baked white enamel.

WARRANTY/LISTINGS

- Suitable for damp locations.
- All units are UL listed and labeled accordingly.



CROSS SECTION

A : 1 3/8"
 B : 1 3/8"

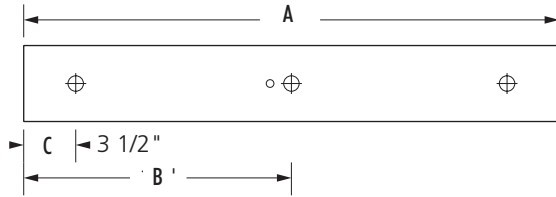
ORDERING GUIDE Example: TS117PIN120

Prefix	#Lamps	Lamp	Ballast Style	Voltage	Factory Installed Options
TS Individual	1	17(24") T8 25(36") T8 32(48") T8	PIN* Performance Instant Start Normal Light Output <10% THD	120 277 UNV* (120/277)	Dimming Ballast - Consult Factory EM Pack - Consult Factory

* UNV ballast in PIN only

DIMENSIONS

Individual



2' Unit	3' Unit	4' Unit
A = 24"	A = 36"	A = 48"
B = 12"	B = 18"	B = 24"
C = 1"	C = 1"	C = 1"

