

# SS Series STAGGERED STRIP

Job Title : \_\_\_\_\_  
 Fixture Type : \_\_\_\_\_  
 Catalog No. : \_\_\_\_\_  
 Notes : \_\_\_\_\_

### DESCRIPTION

- A high quality all purpose staggered strip in a one or two lamp cross section, offered in a variety of T8 configurations.

### HOUSING

- Heavy duty die formed 20 gauge steel housing.
- Snap in socket end plates.
- Slide on ballast cover with tool less retention.
- Knockouts for mounting, conduit feed, cord sets, or continuous row.

### MOUNTING

- Fixtures designed for surface, stem or chain suspension.
- Can be installed as individual units or in continuous row mounting.

### BALLAST

- Thermally protected, resetting, Class P, HPF, non-PCB, UL listed, CSA-certified ballast is standard.
- Rapid start ballasts are sound rated A.
- Standard combinations are CBM approved and conform to UL 935.

### WIRING & ELECTRICAL

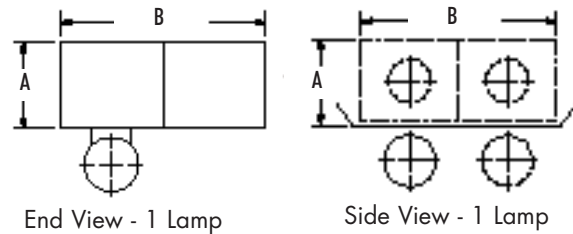
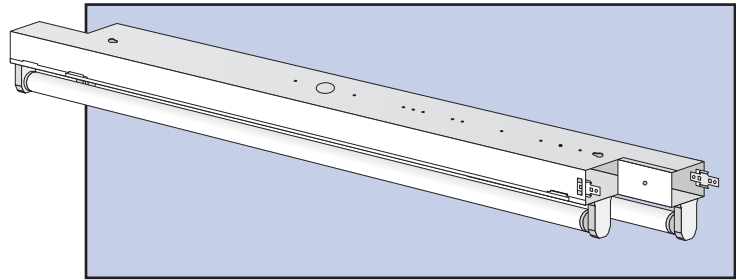
- Fixture conforms to UL 1598 and is suitable for damp locations.
- AWM, TFN or THHN wire used throughout, rated for required temperatures.

### FINISH

- Iron-phosphate pretreatment ensures superior paint adhesion and rust resistance.
- Painted parts finished with high-gloss, baked white enamel.

### WARRANTY/LISTINGS

- Suitable for damp locations.
- All units are UL listed and labeled accordingly.



### CROSS SECTION

A : 1 1/2"  
 B : 3"

### ORDERING GUIDE      Example: SST232ISL277-

Prefix	#Lamps	Lamp	Ballast Style (select one)	Voltage	Factory Installed Options	
SS Individual	1 2	17(24") T8 25(36") T8 32(48") T8	<b>ISL</b> Instant Start Low Wattage <20% THD  <b>ISH</b> Instant Start High Light Output <20% THD  <b>ISN</b> Instant Start Normal Light Output <20% THD  <b>ISNBL</b> Rapid Start Normal Light Output Bi-Level Switching <20% THD  <b>PIL</b> Performance Instant Start Low Wattage <10% THD	<b>PIN*</b> Performance Instant Start Normal Light Output <10% THD  <b>PRN</b> Perf. Programmed Rapid Start Normal Light Output <10% THD  <b>HIL</b> High Performance Instant Start Low Wattage <10% THD  <b>HIN</b> High Performance Instant Start Normal Light Output <10% THD  <b>HPN*</b> High Perf. Programmed Start Normal Light Output <15% THD	<b>120</b> <b>277</b> <b>UNV*</b> (120/277)	Dimming Ballast - Consult Factory  <b>GLR</b> Internal Fast Blow Fuse  <b>GMF</b> Internal Slow Blow Fuse  <b>EM</b> 300 - 400 Lumen EM Pack  <b>EM5</b> 400 - 500 Lumen EM Pack  <b>EM7</b> 600 - 700 Lumen EM Pack  <b>EM11</b> 1100 Lumen EM Pack  <b>EM14</b> 1400 Lumen EM Pack

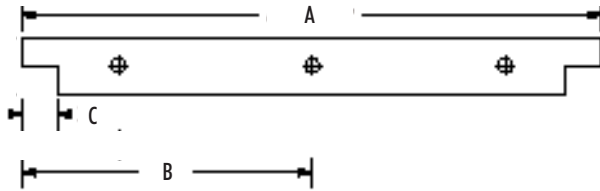
\* UNV ballast in PIN and HPN only

# SS Series

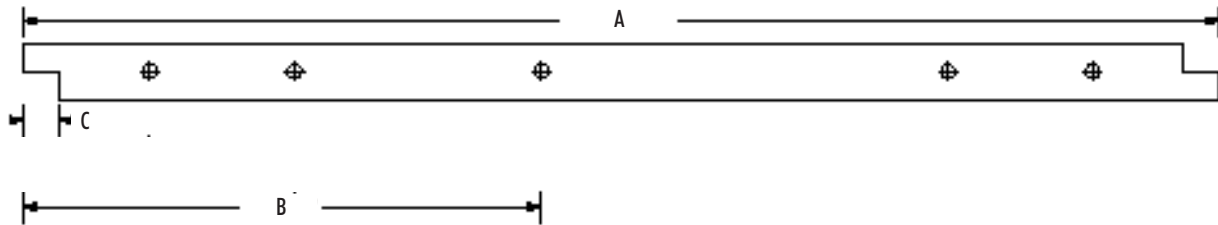
## STAGGERED STRIP

### DIMENSIONS

#### Individual



#### Tandem



#### One Lamp

2' Unit	3' Unit	4' Unit	6' Unit	8' Unit
A = 24"	A = 36"	A = 48"	A = 72"	A = 96"
B = 12"	B = 16"	B = 24"	B = 36"	B = 48"
C = 3"	C = 3"	C = 3"	C = 3"	C = 3"

#### Two Lamp

2' Unit	3' Unit	4' Unit	6' Unit	8' Unit
A = 27"	A = 39"	A = 51"	A = 75"	A = 99"
B = 13 1/2"	B = 19 1/2"	B = 25 1/2"	B = 37 1/2"	B = 49 1/2"
C = 3"	C = 3"	C = 3"	C = 3"	C = 3"

