

Job Title : _____
 Fixture Type : _____
 Catalog No. : _____
 Notes : _____

DESCRIPTION

- A high quality all purpose sidemount strip in a one, two or three lamp cross section, offered in a variety of T8 configurations.

HOUSING

- Heavy duty die formed 20 gauge steel housing.
- Snap in socket end plates.
- Slide on ballast cover with tool less retention.
- Knockouts for mounting, conduit feed, cord sets, or continuous row.

MOUNTING

- Fixtures designed for surface, stem or chain suspension.
- Can be installed as individual units or in continuous row mounting.

BALLAST

- Thermally protected, resetting, Class P, HPF, non-PCB, UL listed, CSA-certified ballast is standard.
- Rapid start ballasts are sound rated A.
- Standard combinations are CBM approved and conform to UL 935.

WIRING & ELECTRICAL

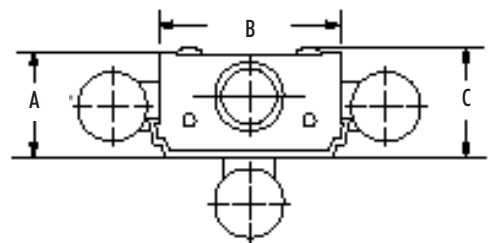
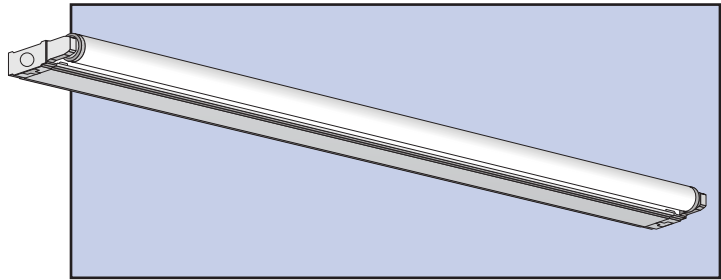
- Fixture conforms to UL 1598 and is suitable for damp locations.
- AWM, TFN or THHN wire used throughout, rated for required temperatures.

FINISH

- Iron-phosphate pretreatment ensures superior paint adhesion and rust resistance.
- Painted parts finished with high-gloss, baked white enamel.

WARRANTY/LISTINGS

- Suitable for damp locations.
- All units are UL listed and labeled accordingly.



CROSS SECTION

A : 1 13/16"
 B : 3 1/8"
 C : 1 29/32"

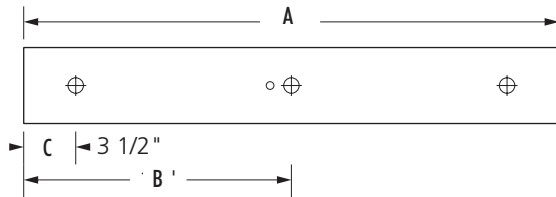
ORDERING GUIDE Example: SMT232ISL277-GLR

Prefix	#Lamps	Lamp	Ballast Style (select one)		Voltage	Factory Installed Options
SM Individual	1	17(24") T8	ISL Instant Start Low Wattage <20% THD ISH Instant Start High Light Output <20% THD ISN Instant Start Normal Light Output <20% THD ISNBL Rapid Start Normal Light Output Bi-Level Switching <20% THD PIL Performance Instant Start Low Wattage <10% THD	PIN* Performance Instant Start Normal Light Output <10% THD PRN Perf. Programmed Rapid Start Normal Light Output <10% THD HIL High Performance Instant Start Low Wattage <10% THD HIN High Performance Instant Start Normal Light Output <10% THD HPN* High Perf. Programmed Start Normal Light Output <15% THD	120 277 UNV* (120/277)	Dimming Ballast - Consult Factory GLR Internal Fast Blow Fuse GMF Internal Slow Blow Fuse EM 300 - 400 Lumen EM Pack EMS 400 - 500 Lumen EM Pack EM7 600 - 700 Lumen EM Pack EM11 1100 Lumen EM Pack EM14 1400 Lumen EM Pack
	2	25(36") T8				
	3	32(48") T8				
SMT Tandem						

* UNV ballast in PIN and HPN only

DIMENSIONS

Individual



2' Unit	3' Unit	4' Unit	6' Unit	8' Unit
A = 24"	A = 36"	A = 48"	A = 72"	A = 96"
B = 12 9/16"	B = 18"	B = 24"	B = 36"	B = 48"
C = 3 1/2"	C = 3 1/2"	C = 3 1/2"	C = 3 1/2"	C = 3 1/2"
			D = 8"	D = 8"
			E = 12"	E = 24"

Tandem

