

# MS5 Series

## MEDIUM STRIP

Job Title : \_\_\_\_\_  
 Fixture Type : \_\_\_\_\_  
 Catalog No. : \_\_\_\_\_  
 Notes : \_\_\_\_\_

### DESCRIPTION

- A high quality all purpose economy strip in a one or two lamp. cross section, offered in a variety of T5 configurations.

### HOUSING

- Heavy duty die formed 20 gauge steel housing.
- Snap in socket end plates.
- Slide on ballast cover with tool less retention.
- Knockouts for mounting, conduit feed, cord sets, or continuous row.

### MOUNTING

- Fixtures designed for surface, stem or chain suspension.
- Can be installed as individual units or in continuous row mounting.

### BALLAST

- Thermally protected, resetting, Class P, HPF, non-PCB, UL listed, CSA-certified ballast is standard.
- Rapid start ballasts are sound rated A.
- Standard combinations are CBM approved and conform to UL 935.

### WIRING & ELECTRICAL

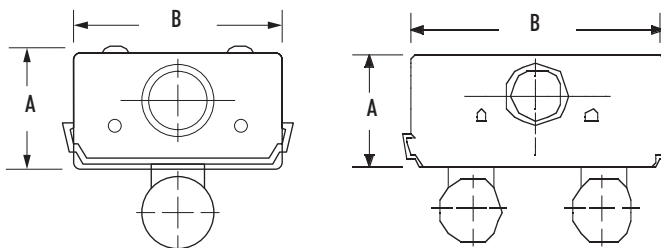
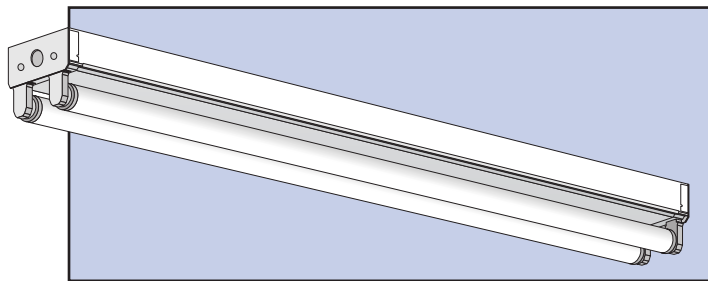
- Fixture conforms to UL 1598 and is suitable for damp locations.
- AWM, TFN or THHN wire used throughout, rated for required temperatures.

### FINISH

- Iron-phosphate pretreatment ensures superior paint adhesion and rust resistance.
- Painted parts finished with high-gloss, baked white enamel.

### WARRANTY/LISTINGS

- Suitable for damp locations.
- All units are UL listed and labeled accordingly.



### CROSS SECTION

Two Lamps  
 A : 1 13/16"  
 B : 3 1/8"

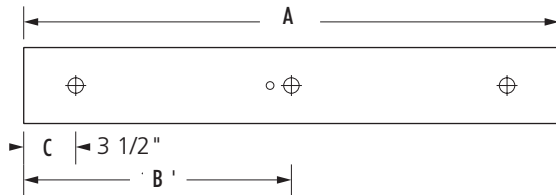
### ORDERING GUIDE Example: MS5114PPN120-GMF

Prefix	#Lamps	Lamp	Ballast Style (select one)	Voltage	Factory Installed Options
<b>MS5</b>	<b>1</b>	<b>14</b> (22") T5	<b>PIN*</b> Performance Instant Start Normal Light Output <10% THD	<b>120</b>	Dimming Ballast - Consult Factory
Individual	<b>2</b>	<b>21</b> (34") T5	<b>PPN</b> Performance Programmed Start Normal Light Output <10% THD	<b>277</b>	<b>GLR</b> Internal Fast Blow Fuse
		<b>28</b> (46") T5		<b>UNV*</b> (120/277)	<b>GMF</b> Internal Slow Blow Fuse
		<b>35</b> (58") T5			<b>EM55</b> 300 - 700 Lumen EM Pack
		<b>24HO</b> (22")	<b>PPN</b> Performance Programmed Start Normal Light Output <10% THD		
		<b>39HO</b> (34")			
		<b>54HO</b> (46")	<b>PPNBL</b> <sup>1</sup> Performance Programmed Start Normal Light Output Bi-Level Switching <10% THD		
		<b>80HO</b> (58")			

<sup>1</sup> PPNBL available only in 54w HO units  
 \*UNV ballast in PIN only

### DIMENSIONS

#### Individual



2' Unit	3' Unit	4' Unit
A = 22 7/16"	A = 34 9/32"	A = 46 1/16"
B = 11 7/32"	B = 17 9/64"	B = 23 1/32"
C = 1 5/8"	C = 1 5/8"	C = 1 5/8"

#### Tandem

