

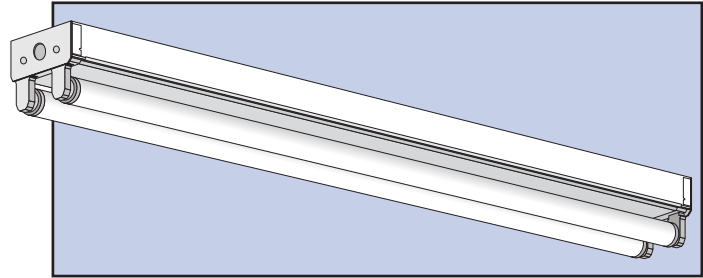
Job Title : _____
 Fixture Type : _____
 Catalog No. : _____
 Notes : _____

DESCRIPTION

- A high quality all purpose strip in a one or two lamp cross section, offered in a variety of T8 configurations.

HOUSING

- Heavy duty die formed 20 gauge steel housing.
- Snap in socket end plates.
- Slide on ballast cover with tool less retention.
- Knockouts for mounting, conduit feed, cord sets, or continuous row.

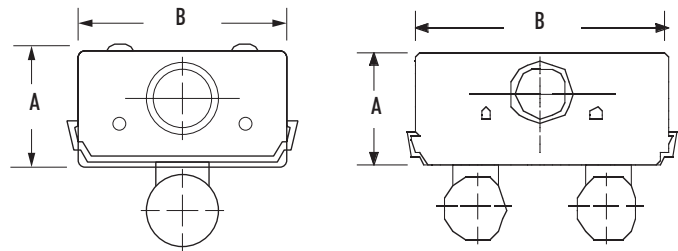


MOUNTING

- Fixtures designed for surface, stem or chain suspension.
- Can be installed as individual units or in continuous row mounting.

BALLAST

- Thermally protected, resetting, Class P, HPF, non-PCB, UL listed, CSA-certified ballast is standard.
- Rapid start ballasts are sound rated A.
- Standard combinations are CBM approved and conform to UL 935.



WIRING & ELECTRICAL

- Fixture conforms to UL 1598 and is suitable for damp locations.
- AWM, TFN or THHN wire used throughout, rated for required temperatures.

FINISH

- Iron-phosphate pretreatment ensures superior paint adhesion and rust resistance.
- Painted parts finished with high-gloss, baked white enamel.

CROSS SECTION

A : 2 1/32"
 B : 4 1/4"

WARRANTY/LISTINGS

- Suitable for damp locations.
- All units are UL listed and labeled accordingly.

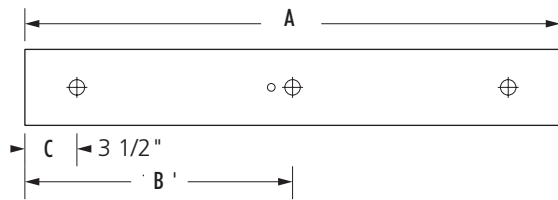
ORDERING GUIDE Example: GST232ISL277-EM5

Prefix	# Lamps	Lamp	Ballast Style (select one)	Voltage	Factory Installed Options
GS	1	17(24") T8	ISL Instant Start Low Wattage <20% THD	120	Dimming Ballast - Consult Factory
Individual	2	25(36") T8	PIN* Performance Instant Start Normal Light Output <10% THD	277	GLR Internal Fast Blow Fuse
GST		32(48") T8	ISH Instant Start High Light Output <20% THD	UNV* (120/277)	GMF Internal Slow Blow Fuse
Tandem			ISN Instant Start Normal Light Output <20% THD		EM 300 - 400 Lumen EM Pack
			ISNBL Rapid Start Normal Light Output Bi-Level Switching <20% THD		EMS 400 - 500 Lumen EM Pack
			PIL Performance Instant Start Low Wattage <10% THD		EM7 600 - 700 Lumen EM Pack
			HPN* High Perf. Programmed Start Normal Light Output <15% THD		EM11 1100 Lumen EM Pack
					EM14 1400 Lumen EM Pack

*UNV ballast in PIN and HPN only

DIMENSIONS

Individual



2' Unit	3' Unit	4' Unit	6' Unit	8' Unit
A = 24"	A = 36"	A = 48"	A = 72"	A = 96"
B = 12 9/16"	B = 18"	B = 24"	B = 36"	B = 48"
C = 3 1/2"	C = 3 1/2"	C = 3 1/2"	C = 3 1/2"	C = 3 1/2"

Tandem

